

# LoPro



## Drive Up Window Series Air Curtains

The Most Cost-Effective Environmental and Sanitation Barrier You'll Never See

### MARS AIR CURTAIN BENEFITS

- REDUCES ENERGY COSTS AND CONSUMPTION
- CREATES EFFECTIVE ENVIRONMENTAL SEPARATION
- MAINTAINS INTERIOR BUILDING TEMPERATURES
- PROVIDES LOW OPERATIONAL COSTS
- MINIMIZES DIRT, DUST, AND FUMES
- PREVENTS FLYING INSECTS FROM INTRUDING
- OFFERS AN UNOBSTRUCTED VIEW, ENHANCING SAFETY

### LOPRO DRIVE UP WINDOW SERIES FEATURES

- AESTHETICALLY PLEASING "LOW PROFILE" 8" DESIGN
- LOW NOISE LEVEL FOR QUIET OPERATION
- EASY TO INSTALL
- LOW MAINTENANCE
- NSF MODELS AVAILABLE (See NSF sheet for complete specifications.)

### DOOR WIDTHS

25" to 30"

### DOOR HEIGHTS

ENVIRONMENTAL SEPARATION	up to 5'
FLYING INSECT CONTROL	up to 5'

### HEATING OPTIONS

ELECTRIC

### AVAILABLE IN FOUR COLORS

**800.421.1266**  
[www.marsair.com](http://www.marsair.com)



AIR SYSTEMS

...Over Every Door

# LoPro Drive Up Window Series Air Curtains



## AVAILABLE COLORS



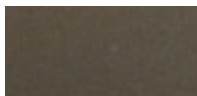
Obsidian Black (standard)



Pearl White



Titanium Silver



Spartan Bronze

MODEL NUMBER	WIDTH OF DOOR	DOOR HEIGHT	FLA SINGLE PHASE		SOUND dBA	WEIGHT (lbs)
			115V	208V/230V		
LPN25*	25"	7' - 8'	2.4	1.2/1.2	49	24
LPN28*	28"	7' - 8'	2.4	1.2/1.2	49	25
LPN30*	30"	7' - 8'	2.4	1.2/1.2	49	28
LPV25	25"	7' - 8'	2.4	1.2/1.2	49	24
LPV28	28"	7' - 8'	2.4	1.2/1.2	49	25
LPV30	30"	7' - 8'	2.4	1.2/1.2	49	28

\* LPN units are ETL Sanitation (NSF/ANSI 37) approved. Variable speed not available. Please refer to marsair.com under Submittals for complete technical information.

## Typical Applications: Drive-Up Windows • Concession Stands

**ASSOCIATION APPROVALS AND LISTING.** All Mars Air Systems products are manufactured using the best materials and components available. They are crafted by highly skilled, experienced tradespeople. Our products must pass stringent quality control standards. Mars Air Systems products are reliable, durable, and meet the stringent listing or certification requirements of many organizations. Specifics vary depending on the model, options installed or application usage. **For specifics and warranty information, please call factory for details.** Mars reserves the right to make improvements and changes to specifications without notice.



NSF / ANSI 37

DISTRIBUTED BY:



...Over Every Door

800.421.1266

[www.marsair.com](http://www.marsair.com)

14716 South Broadway  
Gardena, CA 90248