

CLEANSEAL DOOR SYSTEMS

EXCEPTIONALLY CLEAN

FDA compliant single-ply polyester monofilament PVC coated curtain is non-porous, non-shedding, not absorptive, and non-permeable. All exposed metal is 304 (316L optional) stainless steel with #4 brushed finish. Sloped top shrouds completely enclose the curtain roll and drive assembly, reducing cleaning and maintenance. Easy wipe-down and quick inspection of side frames and guides, with nothing to disassemble, make this the ultimate roll-up door for clean manufacturing environments.

ULTIMATE DURABILITY

If accidentally impacted, the Quick Flex-Tab™ reset system allows the door to be snapped back into place in seconds with no tools or disassembly required. The simple low stress counterbalance system, integrated into the door design, helps balance the curtain and bottom rail assembly for smooth operation while reducing motor and gear train wear. The puncture-resistant fabric withstands continued impacts by pallet jacks or transfer carts. Heavy-duty stainless steel side frames and bottom bar further ensure long life for the door.

ADVANCED TECHNOLOGY

Our standard frequency inverter, in conjunction with encoder technology, allows for smooth and quiet soft start/soft stop door operation. The adjustable open and close speeds, to 50"/sec., allows the user to tailor the door operation to exacting module needs. Using flexible inverter technology, the user is allowed to choose from a variety of line side voltages, including 120 VAC single phase.

SUPERIOR PERFORMANCE

Available with a four-tiered performance system. A built-in recessed mini-beam system is designed to detect objects in the doors' path and initiate instant reversal. Sensitive SofTouch™ electronic reversing edge is installed in the curtain bottom rail assembly as well. Two-speed operation allows independent adjustments from 6" to 50" per second to the open and close speeds. To meet emergency egress (i.e., power failure), a manual release is standard on both sides of the door for easy opening.

UNMATCHED QUALIFICATIONS

With over 40 years of combined experience, our professional sales consulting team will ensure your mission-critical requirements, while maintaining our uncompromising dedication to quality and value added service.

MODEL 115S SPIRIT®

High-Speed Fabric Roll-Up Door System

MODEL 115S

Shown with optional vision panel



Bold Innovation. Superior Design. Unsurpassed Quality.

THE INDUSTRY'S UNPARALLELED DOOR SYSTEM OF CHOICE

Cleanseal's fabric roll-up door is designed, engineered and precision manufactured with over 20 years of experience partnering with the leading pharmaceutical companies and architects across the country. The Excel fabric roll-up door combines a clean, attractive finish, with a heavy-duty fabric curtain, stainless steel components, encoder technology and a simple breakaway system all manufactured for clean environment areas.

Using cutting-edge technology and exacting criteria for quality, these doors have surpassed market demands and exceed cGMP, FDA and EMEA requirements. Our quest for uncompromising quality, and our steadfast commitment to meet our customer's ever-changing expectations, is evident in one of the most durable and ultra-clean roll-up door systems available in today's highly controlled clean environment marketplace.

MODEL 115S SPIRIT®

High-Speed Fabric Roll-Up Door System MODEL 115S

DESIGN AND CONSTRUCTION

DOOR SIZES:

- Up to 12'0" x 14'0".
(For additional sizes - consult factory.)

PANEL CONSTRUCTION:

- .060 thick single-ply polyester monofilament PVC coated curtain material, FDA compliant.
- White or blue color curtain standard (other colors available upon request).
- A 27" high, full width, clear PVC vision panel available as an option.

FRAME AND SHROUD CONSTRUCTION:

- Side frames constructed with 12 ga., 304 #4 stainless steel with 16 ga. stainless steel covers.
- Side frames designed for maximum durability and easy wipe-down/wash-down with quick inspection.
- 16 ga., 304 #4 stainless steel sloped shrouds completely enclose the curtain roll and drive motor.

OPERATOR FEATURES:

- High performance, high efficiency 3/4 h.p. electric motor.
- Available in 120v single phase, or 208/230/460 three phase power.
- Adjustable open and close speeds up to 50"/sec. (42"/sec. open and 21"/sec. close std).

PERFORMANCE FEATURES:

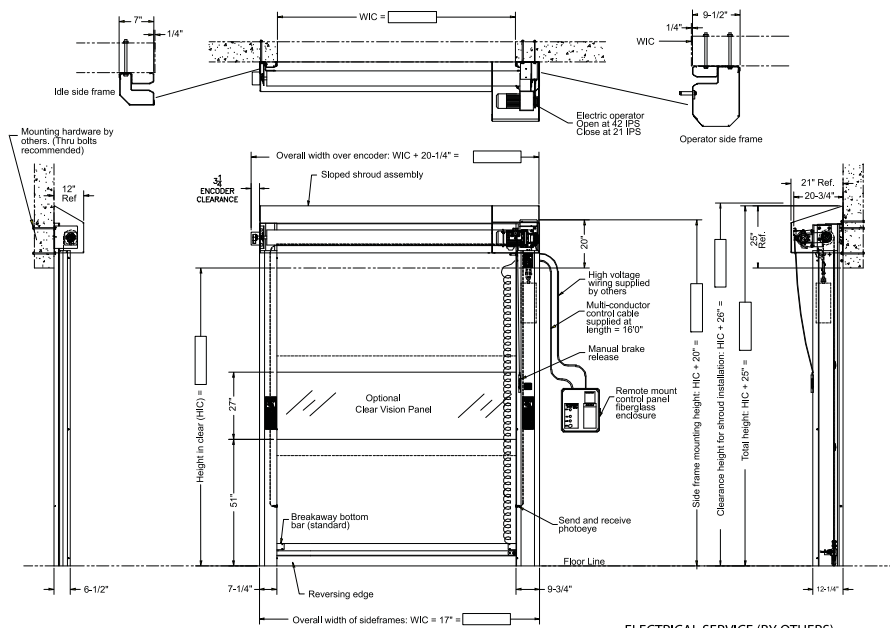
- Standard pushbutton to open and time delay to close.
- Recessed send and receive reversing photoeye in the side frames (std).
- SofTouch™ electronic instant reversing edge on bottom rail assembly (std).
- Simple counterbalance system enables door to fully open with a manual release mechanism on both sides of door.
- Quick Flex-Tab™ reset system allows the door panel to be snapped back into place in seconds after an impact.

OPTIONS:

- Vision panel 27" high across full width of curtain.
- Galvanized steel in lieu of stainless steel.
- Powder-coated side frames and shrouds.
- Custom designed interlocking system.
- Touchless activation devices.
- Explosion-proof operator and controls.
- Time delay close.
- Pre-announce to close kit (light/alarm/or combo).
- Pull cord actuator.
- Remote mount push buttons.
- Photoeye activation.
- Radio control activation-single or multi-channel transmitter.
- Loop detector system.
- Motion detector.

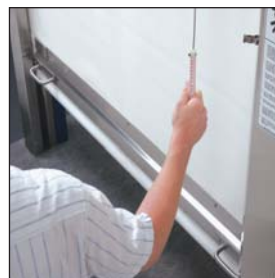
WARRANTY:

- One year limited warranty on all components.
- ASI reserves the right to modify specifications without notice.



STAINLESS STEEL SHROUD

Completely enclosed barrel and operator assembly, eliminating excessive cleaning.



DUAL SIDE MANUAL RELEASE

Permits instant manual operation during power failures or other emergencies.



BREAKAWAY FEATURE

Upon door impact, breakaway feature offers a quick and easy reset system that eliminates costly repairs. Sets back into place in seconds with no tools required.



APPLICATIONS

Ideal for material transfer airlocks, conveyor systems, packaging lines and washbays.



Cleanseal Doors | An ASI Technologies, Inc. Company
5848 North 95th Court | Milwaukee, WI 53225

PHONE: 414.464.6200 | FAX: 414.464.9863 | TOLL-FREE: 800.558.7068
www.cleansealdoors.com