



**enviro**<sup>®</sup>  
Cold Storage Doors

# MODEL XP 500

Single Infitting Cooler / Freezer Door System

MODEL XP 500 MANUAL / POWER

## DESIGN AND CONSTRUCTION

### DOOR SIZES

- Minimum: 2'6" x 2'6".
- Maximum: 6'0" x 8'0".

### PANEL CONSTRUCTION

- Sealed and unitized design.
- 4" or 6" panel thickness.
- 24 gauge white galvanized steel.
- Internal hardware backing plates – non-corrosive.
- Freezer doors provided with "No Frost" UL listed, self-regulating heater cable.
- Grease-resistant, closed cell full perimeter gasket rated -20 ° to +120 ° degree F -

### HARDWARE

- Heavy duty cam lift hinges.
- Lockable latch and adjustable strike.
- Inside safety release.

### FACE FRAME AND JAMB CONSTRUCTION

- USDA approved white virgin high density polyethylene extrusion.
- Corrosion free.
- Smooth, clean surface.
- Same color throughout to minimize appearance of dents and scratches.

### INSULATION

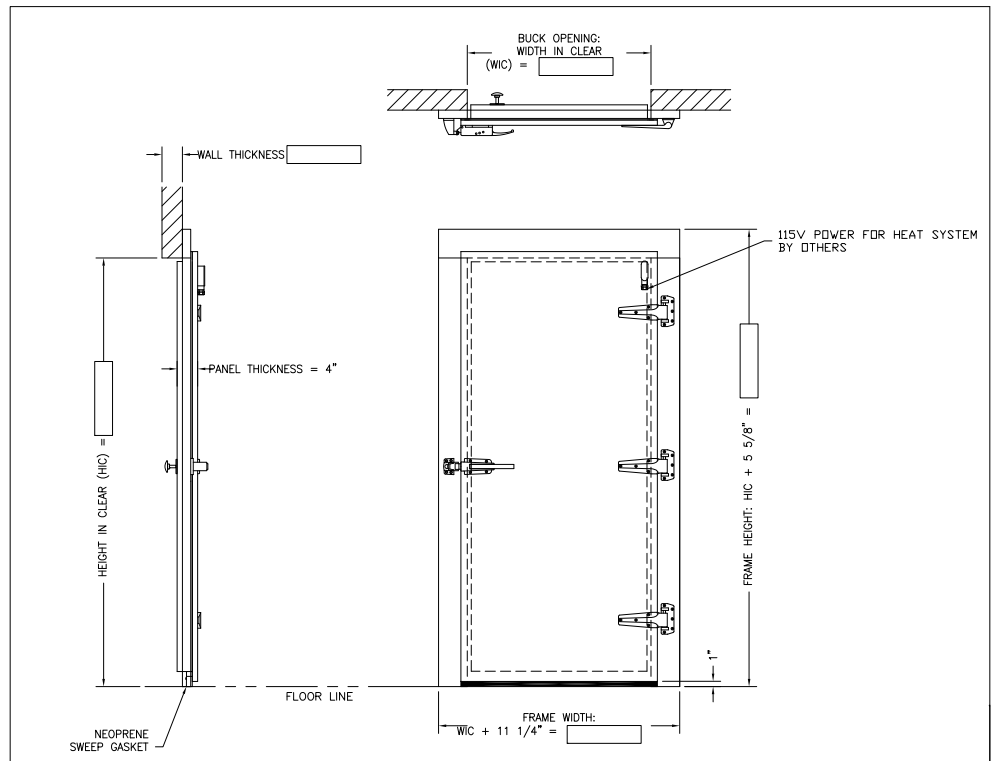
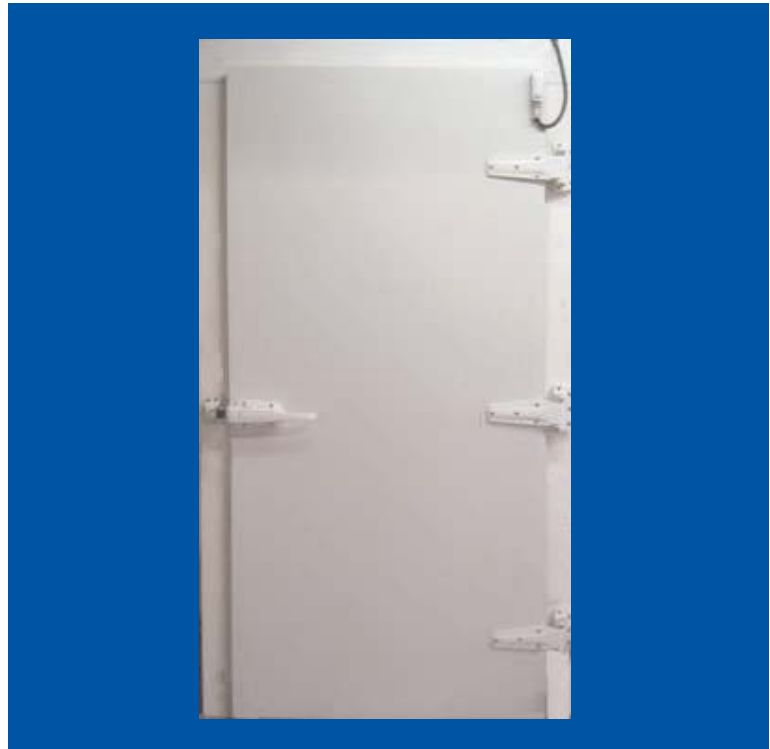
- Poured Class I polyurethane foam.
- 4" door R-30 / 6" R-45.
- "K" factor of .12 at 75°F.

### WARRANTY

- One year on all components.

### OPTIONS

- View windows - standard and heated.
- Panic exit device.
- Interior bump open bar with exterior latch door close.
- Stainless steel construction.
- Stainless steel hardware.
- Powder coated hardware – grey or white.
- Jamb and mirror trim.
- Kickplates and jamb guards.
- Double door. XP-DS 500.
- High sill construction.
- Door closer.



## THE LEADER IN COLD STORAGE DOOR INNOVATION

Enviro Doors | An ASI Technologies, Inc. Company

5848 North 95th Court | Milwaukee, WI 53225

PHONE: 414.464.6200 | FAX: 414.464.9863 | TOLL-FREE: 800.558.7068

[www.envirodoors.com](http://www.envirodoors.com)

500 03/25/08