

# Vertical Rise Two Panel By-Pass Cooler Door

Galvanized Metal  
Manual Operation

## Data Sheet

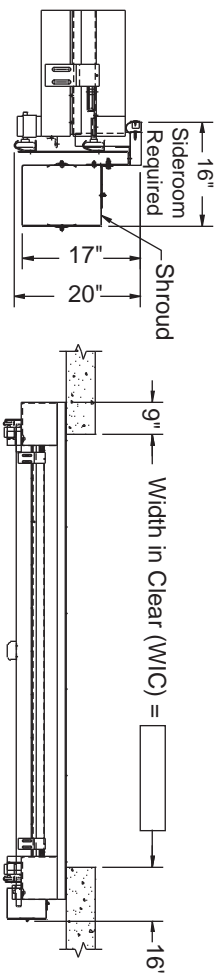
Model 520



### FEATURES

- Sealed and unitized high strength panel with reinforced steel.
- Adjustable cast iron stack weights.
- Smooth, easy, reliable operation.
- Heavy-duty hardware.
- Completely insulated panels.
- Provides external security.
- Space efficient design.





Model 520

**DESIGN AND CONSTRUCTION**

**DOOR SIZES**

- Minimum: 5' x 7'.
- Maximum: 10' x 12'.

*Other sizes available - consult factory.*

**PANEL CONSTRUCTION**

- Unitized design.
- 16 gauge formed galvanized steel edge capping.

- Shell constructed of 24 gauge galvanized steel.
- 7 gauge hardware mounting plates.

- Full perimeter gasketing.

**OPERATION**

- Manual.

**INSULATION**

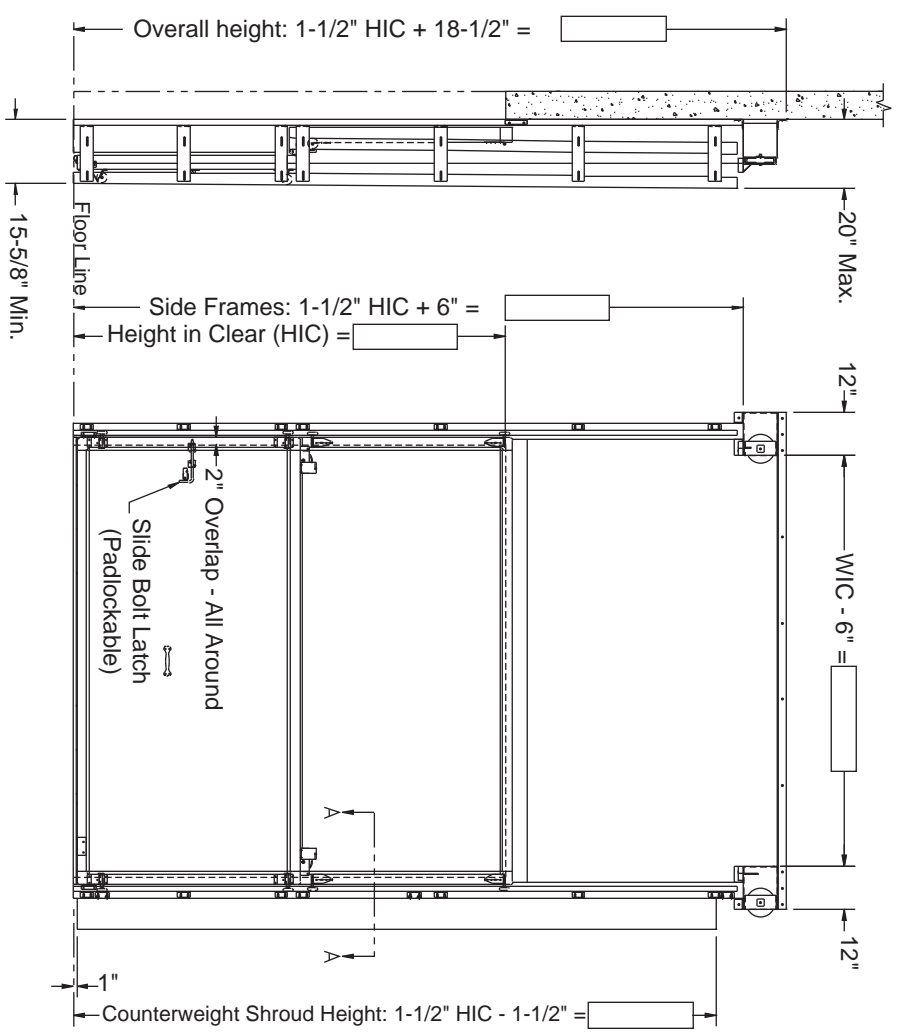
- 3" polyurethane foam.
- R25 rated.
- "K" factor of .12 at 75°.

**WARRANTY**

- 1 year on all components.

**OPTIONS**

- Window(s).
- Dock leveller door.
- Power Operation.



5848 N. 95th Court • Milwaukee, WI 53225 • (414) 464-6200 • (800) 558-7068 • FAX: (414) 464-9863 • www.asidoors.com

For complete Architectural Specifications contact ASI or visit [www.asidoors.com](http://www.asidoors.com)



520 7/2004 R

Consistent with our policy of continued product improvement, we reserve the right to change product specifications without notice or obligation.

©2002, ASI TECHNOLOGIES, INC. • PRINTED IN U.S.A.